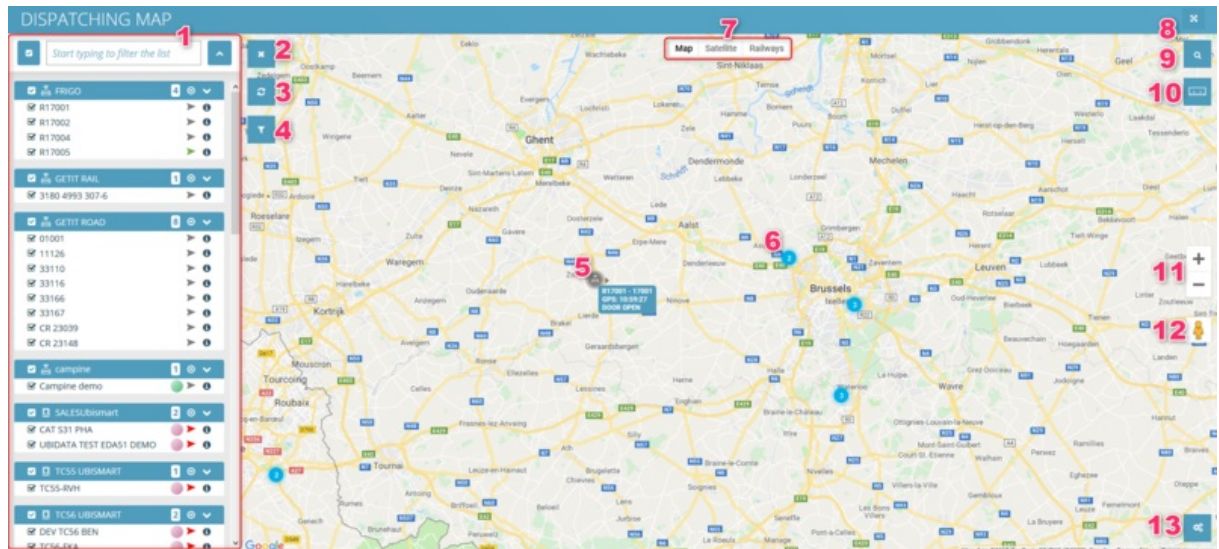


Dispatching Map user-manual

The Dispatching Map is an important tool which gives the user access to real-time information about drivers, vehicles, trailers (where they are, what they are doing...), Points Of Interest (POIs) and geo-fencing zones.

The Dispatching Map is accessible in Ubi.TT (Ubidata's Track and Trace portal) through the menu items Dispatching -> Map
Here's how the standard screen looks like:



Note:

- In this context, an **entity** can be a vehicle, a trailer, a wagon or a driver; but also a tracking device (DBB) or a PDA.
- **elements** of the Treeview are entities, POIs and zones.

The numbers on the above screenshot represent:

1. Treeview
2. Hide/show Treeview
3. Refresh
4. Show/hide secondary filters
5. A single entity
6. Multiple entities
7. Display Map, Satellite or Railways
8. Full screen
9. Search box
10. Ruler
11. Zoom in/out
12. Pegman
13. Options (traffic and labels)

Panning and Zooming

To move the map click and hold the left mouse button and drag the map as desired.

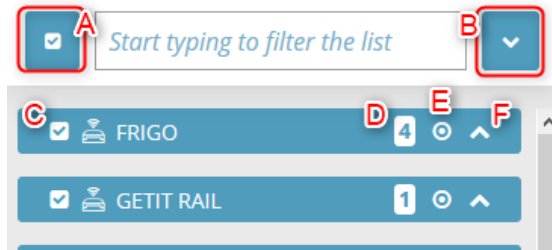
To zoom in and out you can use the '+' and '-' buttons on the right-hand-side of the map (marked '3'), or the wheel of the mouse.

To zoom in you can also double click any point of the map, or hold the SHIFT key + the left mouse button to mark a rectangular area of interest.

When the dispatching map page is accessed for the first time, the zoom level of the map is optimized to display the complete fleet (entities).

1. Treeview

The elements in the Treeview are entities, POIs and zones. All elements in the Treeview are put per group. The elements which are checked in the Treeview, are shown on the map. Both groups and elements, are ordered alphabetically.










A. The left checkbox is used to check/uncheck all elements from the Treeview.

B. The right button allows to fold/unfold all groups within the Treeview.

C. This checkbox allows to check/uncheck all elements in the corresponding group (in this example, group FRIGO).

The symbols next to the checkbox refer to the following:

Pictogram Refers to

	DBBs (dark black boxes)
	PDA's
	Drivers
	Trailers
	Vehicles
	POIs
	Zones

According to the contractual agreements you have with Ubidata, you might have some or all of these symbols.

For example, if your company manages wagons on railways, you most probably will only have a symbol for wagons (no drivers, trailers, vehicles, DBBs, and PDA's) as well as POIs and zones (if these were created in the portal).

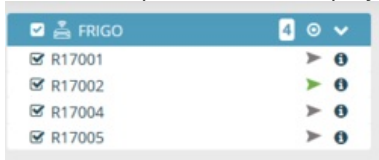
D. This number shows how many elements there are in this particular group (here, there are 4 elements in the group FRIGO).

E. Clicking on this symbol will make a focus on all the elements in the group, on the map.

F. Clicking on this symbol will display all the elements of the corresponding group (here, all elements in the group FRIGO).

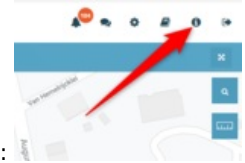
It is important to note that an element which is part of different groups, will appear in every group it is part of, in the Treeview.

In our example, when we display the elements (in our case, entities), we get:



Each individual element can then be checked/unchecked (left checkbox) in order to be shown or not on the map.

On the right of each element, there might be a colored circle as well as a colored arrow. The meaning of

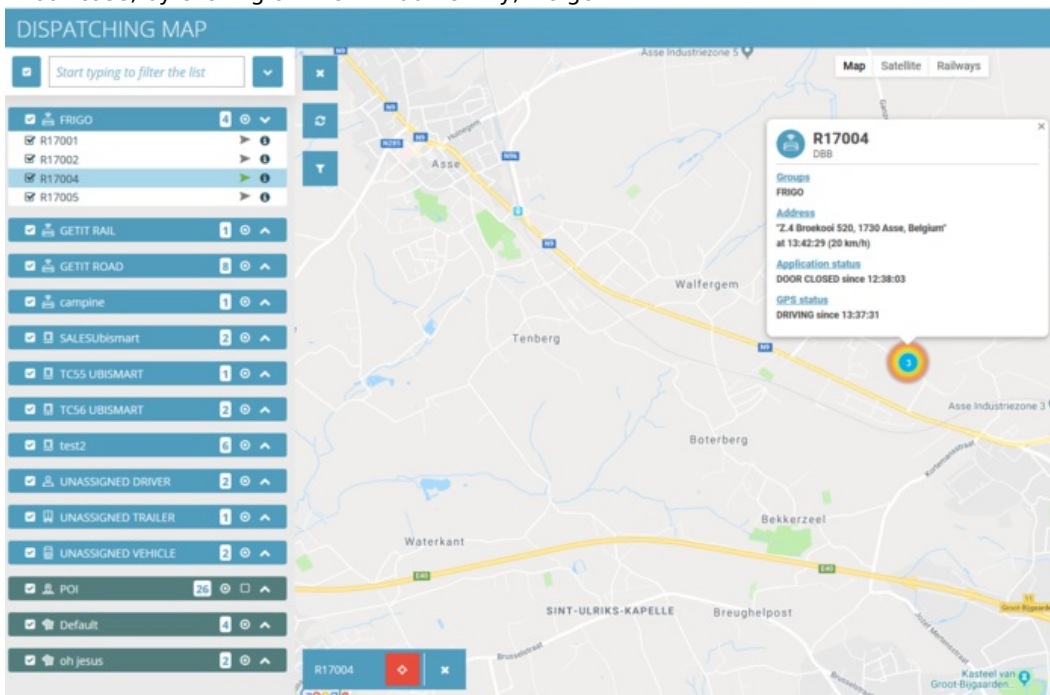


the colors can be found by clicking in the upper right corner on the following button:

It is also possible to know the meaning of the colors by hovering with your mouse over the colored circle or arrow.

Clicking on the small **i** button which is located on the right of each element in the Treeview, will make the map focus on the selected element (an orange-yellow circle will appear around the element on the map) and will show information regarding that element.

In our case, by clicking on the R17004 entity, we get:



We can see on the map, in the white box next to the element, to which group the element is part of as well as the address it is located, the application status and the GPS status.



At this stage, the map is focused on the element and the focus button is red. In order to remove the focus, the user needs to click on the X in the following box (bottom of the page):



Another way to lose the focus is by moving the map (trying to see something else). When the focus is

lost, the icon turns from red to blue.

It is possible to re-center on the selected element by clicking on the blue focus icon



For the POIs, there is an additional logo:  which allows to toggle (show) the POI label.

2. Hide filter window / Treeview

Clicking on this button will hide the Treeview and will change the X button into the hamburger button



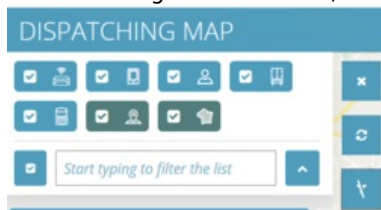
. By clicking on the hamburger button, the Treeview will reappear.

3. Refresh page

Clicking on this button will refresh the page








4. Show or hide the secondary filters

When clicking on this button, the following screen will appear:



Where you can check or uncheck boxes. The boxes refer to:

Pictogram Refers to

-  DBBs (dark black boxes)
-  PDAs
-  Drivers
-  Trailers
-  Vehicles
-  POIs
-  Zones

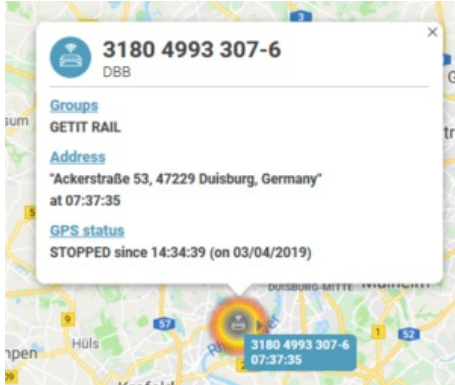
IMPORTANT NOTICE:

If you uncheck the checkbox next to an icon, the user will make all the referred elements of this icon disappear on the map.

If you click on the icon itself, the referred elements will disappear on the map AND in the Treeview.

5. A single entity

When clicking on a single element on the map, you will see the same information as if you had clicked on the element in the Treeview: the element's group(s), its address and its GPS position:



6. Multiple entities

In order to keep a good and clear overview of the map, we have clustered the elements.

If you see for example a blue circle with the number 10 in it, it means there are 10 elements nearby.

If you zoom in, the elements will be regrouped in smaller clusters until you zoom so much that you will see the individual elements.

Sometimes, if you zoom to the maximum, you will still not see the different elements.

For example:



In order to see the elements, you have to click on the blue circle with the number in it. You will then see all elements appear:

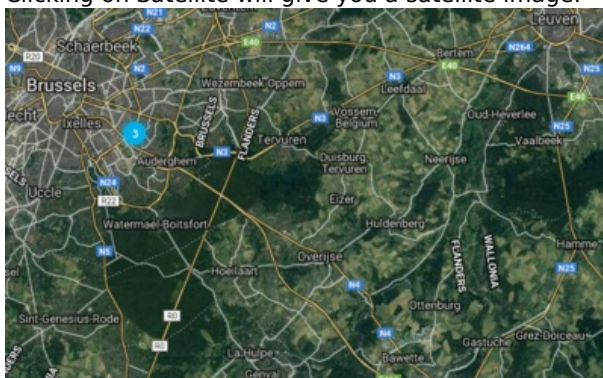


In our case you can see

- 4 PDAs from which 3 are offline (red) and 1 is stopped (grey)
- 1 driver which is offline (red)
- 1 vehicle which is offline (red)

7. Display Map, Satellite or Railways

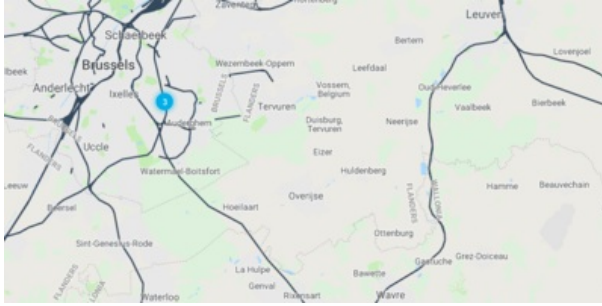
Clicking on Satellite will give you a satellite image.



A satellite image may help the dispatcher to guide a driver to a desired location in real time.

Clicking on Railways will show the railways on the map.

In order to see the railways, you have to zoom in to a certain level (otherwise the railways won't be visible):



8. Set full screen

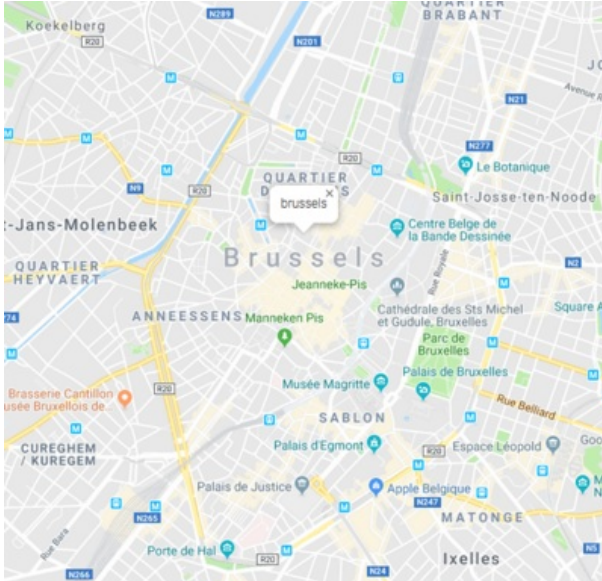
Clicking on this button will set the map to full screen inside the web browser. You can re-click on it to put it back to normal.

9. Search

When pointing with the mouse on this button, you can type in a place to search on the map. Once the place has been typed, you must push ENTER.

The window will then be centered on the searched place and a little white box with the place name will be placed on the map.

For example, if you type "Brussels" in the search box, and then push ENTER, you will see:



10. Measure distances




Once you click on this button, it will turn red. You can then click somewhere on the map (with left click). This action will place a marker on the map. If you click a second time (with left click) somewhere else on the map, another marker will be placed and the distance between the 2 markers will be shown in the middle of both markers. You can move the markers by clicking (with left click) on them and drag them somewhere else. If you click a second time on a marker, the marker will disappear. Every time you click with left mouse click on the map, it will show the distance between the last two

markers. Additionally, on each marker, you will find the total distance starting from the first marker. For example:



If you place the last marker on top of the first marker, you will see total surface of the enclosed area:




In order to remove the distances, you must click on the "measure" button on the right side . The button will go back from red to blue.

11. Zoom in/out

You can use these buttons to zoom in an out on the map. It has the same effects as scrolling with the mouse.

12. Drag Pegman on the map to open street view

You can drag Pegman  on a road. This will open Google Street View. This might be useful to help guide a driver in real time.

13. Options (Traffic and Labels)

When you point the mouse pointer on this button, you can select to show live traffic. You can also choose to show/hide a name, reference, date time of latest position and application status of



the elements on the map.